

Sample Boards 2012

LAST UPDATED: 22-03-2021

DEMO



Sample Boards

- 12-005 Sample Boards Bosman.....3**
 - 12-005.....3**
 - 12-005-2.....4**
- 12-006 Sample Boards Shakeri.....5**
- 12-007 Sample Boards S Steele6**
 - 12-007-1.....6**
 - 12-007-2.....7**
 - 12-007-3.....8**
- 12-008 Sample Boards Soini.....9**

12-005 Sample Boards Bosman

12-005

Connector:

4x SMA

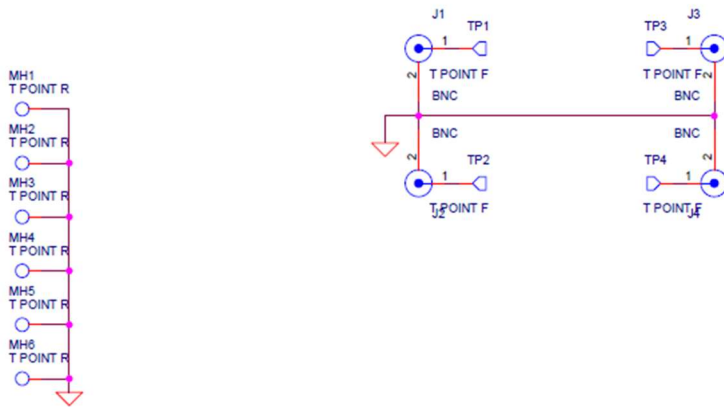
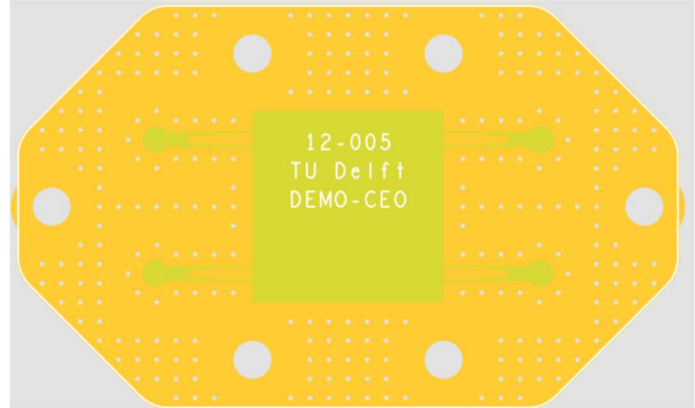
Copper Finish:

Ni/Au Selectief

Size (LxWxT):

21 x 34.5 x 1.55

Schematic:



12-005-2

Connector:

3x 2x4 pins 2.54 mm header

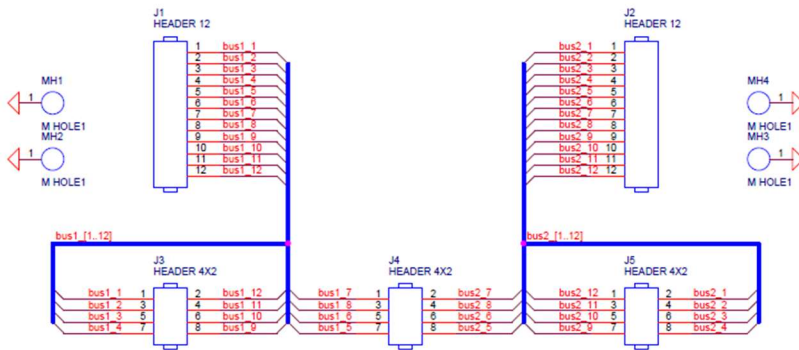
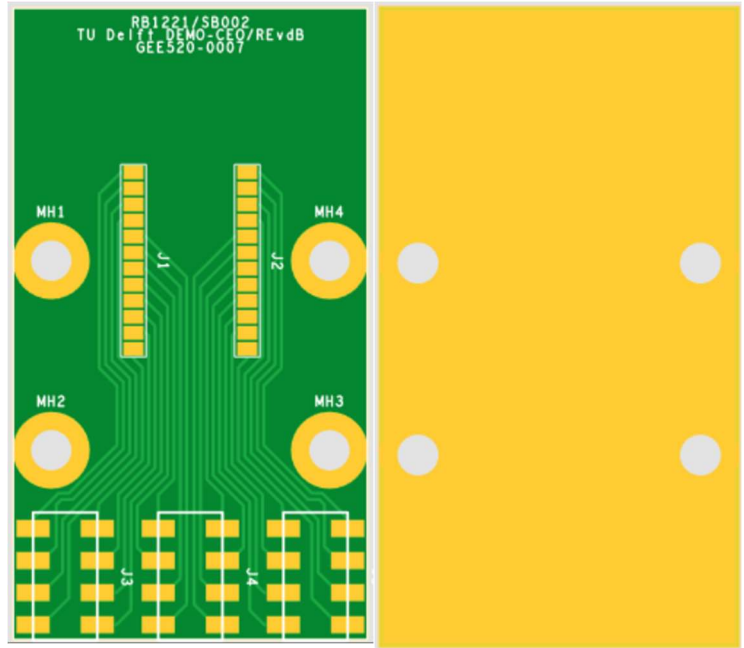
Copper Finish:

Ni/Au Selectief

Size (LxWxT):

50 x 28 x 1.55

Schematic:



12-006 Sample Boards Shakeri

Connector:

5x SMB Straight PCB mount

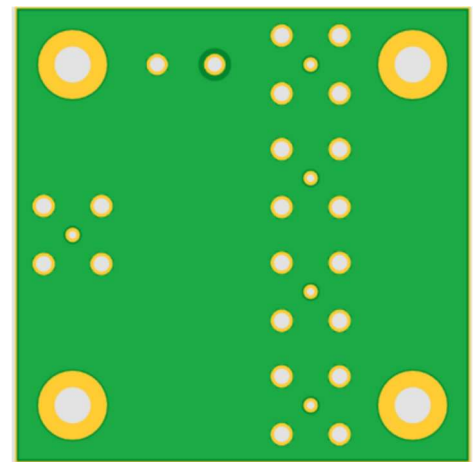
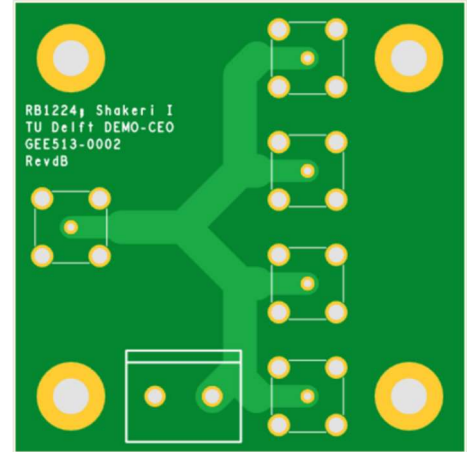
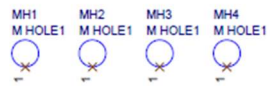
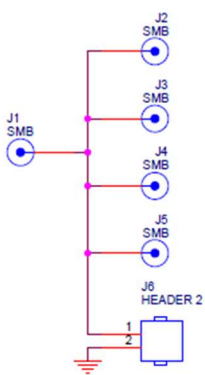
Copper Finish:

Ni/Au Selectief

Size (LxWxT):

40 x 40 x 1.55

Schematic:



12-007 Sample Boards S Steele

12-007-1

Connector:

1x SMA Launcher

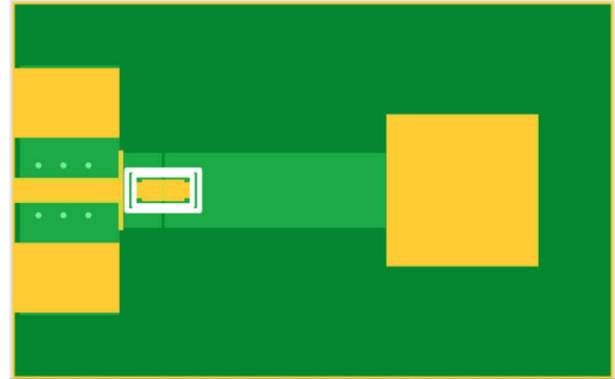
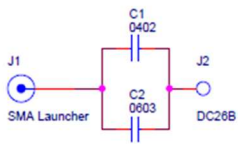
Copper Finish:

Ni/Au Selectief

Size (LxWxT):

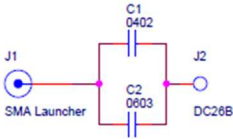
15 x 24 x 1.55

Schematic:



12-007-2

Connector:
1x SMA Launcher
Copper Finish:
Ni/Au Selectief
Size (LxWxT)
15 x 44 x 1.55
Schematic:



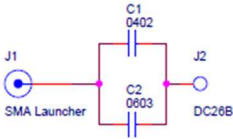
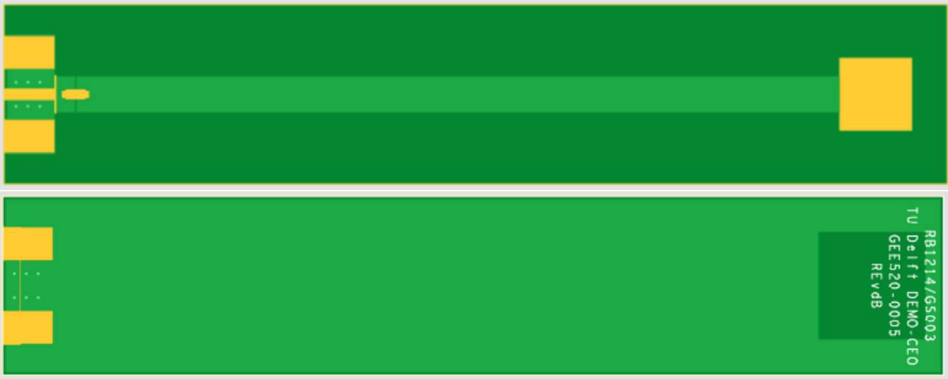
12-007-3

Connector:
1x SMA Launcher

Copper Finish:
Ni/Au Selectief

Size (LxWxT)
15 x 79 x 1.55

Schematic:



12-008 Sample Boards Soini

Connector:

1x SMA Right Angle

2x 4 pins 2 rows Harwin 2.54mm Header

Copper Finish:

Ni/Au Selectief

Size (LxWxT)

39 x 28 x 1.55

Schematic:

